



February Newsletter



Bright Beginnings Early Learning Program 281-482-7535 ex. 501
Jennifer White—Director Dee Ann Emberton—Asst. Director

Registration

Thank you all so much for turning in your paperwork promptly and helping us to have a successful registration! Remember that if you haven't turned in your 2019-2020 registration and supply fee please do so asap! We will open registration to the public on Friday, February 15th. If you know anyone that may be interested in joining our school please pass this information along!

Community Helpers

We're going to have some special visitors this month as we learn all about helpers in our community. We'll get to talk to a FISSD bus driver and meet a real police officer. They will teach us all about how we can be safe in our homes and community.



Tuition Due

1 Year Olds (M/W)—\$185

1 Year Olds (T/Th) - \$200

2 Day (M/W)—\$175

2 Day (T/TH) - \$190

3 Day—\$275

4 Day—\$330

Bridge—\$350

Open Registration for Church Members

Friday, Feb. 8th

Open Registration for the Public

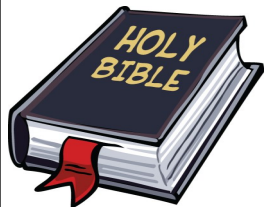
Friday, Feb. 15th

President's Day Holiday

Monday, Feb. 18th

Spring Break

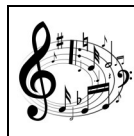
March 11th-15th



"How wide and long and high and deep is the love of Christ."

Ephesians 3:18

February is the perfect month to talk about the love God has for us. We will discuss this love as we learn the stories of the prodigal son and the lost sheep. We will experience the love Jesus showed when he decided to have lunch with Zacchaeus, the despised tax collector, and when he told the people to let the little children come to him. Knowing that God loves us no matter what changes everything.



In music class this month we will get to experience the instruments of the orchestra. Each week we will learn about a new instrument family and even get to hear and see the real instruments!



In science this month we will be learning about the different types of dinosaurs and explore the differences between carnivores, herbivores, and omnivores. We will even get to erupt a volcano!! To close the month we will discuss different community helpers. Bring something dinosaur or community helper related for show and tell. See your child's teacher for your day!